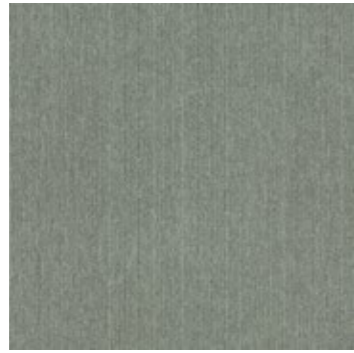




# Elevation II

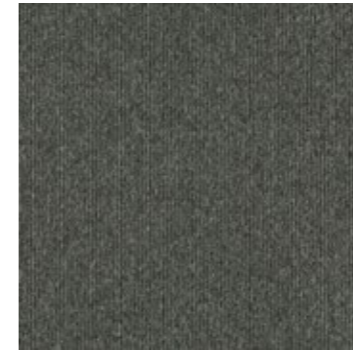
Interface®



307130 Light Grey



307131 Greige



307138 Carthusian



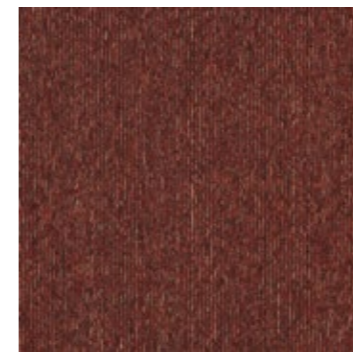
307139 Snake Charmer



307132 Honey



307133 Olive



307140 Paprika Blossom



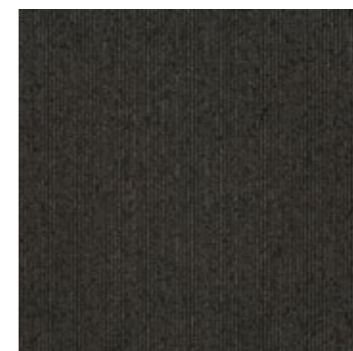
307141 Summernight



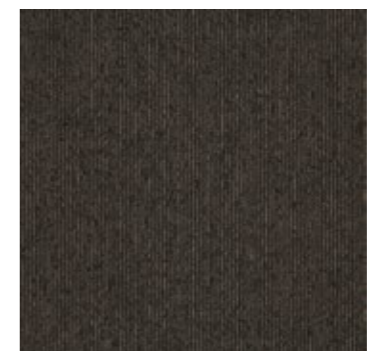
307134 Old Silver



307135 Linen Shade



307142 Charcoal



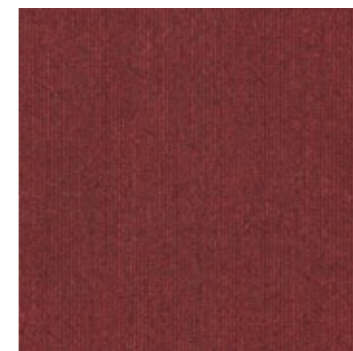
307143 Espresso



307136 Camelot



307137 Violet



307144 Cinema



307145 Touareg





307139 Snake Charmer

Installed: Quarter Turn



307134 Old Silver & 307142 Charcoal

Installed: Quarter Turn



<b>Product Definition</b>	Microtuft Patterned Level Loop Tile
Konstruktion	Gemusterte Microtuft-Schlingenqualität
Descripción	Moqueta modular bucle de bajo perfil con diseño (Microtuft)
Description	Dalle de moquette Microtuft à velours bouclé
Type	Microtuft bouclé
Descrizione	Bouclè microtuft

<b>Pile Material</b>	100% Nylon
Polfasermaterial	100% Polyamid
Composición Fibra	100% Poliamida
Composition	100% Polyamide
Poolmateriaal	100% Polyamide
Fibra	100% Poliammide
<b>Pile Yarn Weight</b> / Poleinsatzgewicht / Peso Fibra / Poids de fibre / Poolinzetgewicht / Peso Felpa	360g/m <sup>2</sup> ± 5%
<b>Total Weight</b> / Gesamtgewicht / Peso Total Poids total / Totaalgewicht / Peso Totale	4154g/m <sup>2</sup> ± 5%
<b>Pile Height</b> / Polschichtdicke / Altura Fibra / Hauteur de la fibre / Poolhoogte / Altezza Felpa	ca. 0,7 mm
<b>Total Thickness</b> / Gesamtdicke / Espesor Total / Epaisseur totale / Totale dikte / Altezza Totale	4,8 mm ± 0,3 mm
<b>Gauge/Ends 10 cm</b> / Teilung x 10 cm / Galga x 10 cm / Jauge-Rangs par 10 cm / Rijen per 10 cm / Serraggio x 10 cm	5/64 - 50,4
<b>Tufts per m<sup>2</sup></b> / Noppenzahl/m <sup>2</sup> / Puntadas m <sup>2</sup> / Densité du tuft par m <sup>2</sup> / Aantal noppen per m <sup>2</sup> / Densità Punti	186,480 ± 5%
<b>Backing Type</b> / Rückenkonstruktion / Soporte / Sous-couche / Ruguitvoering / Sottofondo	Graphlex®
<b>Wear Classification</b> / Beanspruchungsklasse / Clasificación al tráfico / Classement Gebruiksintensiteit / Resistenza all'usura	Heavy Contract (EN 1307) Class 33 / LC1

<b>Style</b>	60711
5m <sup>2</sup> - 20 tiles per box (50 x 50 cm ± 0,2%)	

<b>Radiant Panel</b> / Schwerentflammbarkeit	(EN ISO 9239/1) Euroclass Cfl s1 (EN ISO 13501)
<b>Hot Metal Nut</b>	Pass, low radius of effects of ignition (BS 4790)
<b>Dimensional Stability</b> / Dimensionsstabilität / Estabilidad Dimensional / Stabilité dimensionnelle / Dimensionele stabiliteit / Test Stabilità dimensionale	≤ 0,2% (ISO 2551 / EN 986)

<b>Sound Absorption</b>					
<b>125Hz</b>	<b>250Hz</b>	<b>500Hz</b>	<b>1000Hz</b>	<b>2000Hz</b>	<b>4000Hz</b>
0.02	0.01	0.02	0.14	0.20	0.25



## Light Value

Product	Colour No	Colour Name	L Value*	Y Value*
<b>Elevation II</b>	307130	Lightgrey	48.2	17.0
	307131	Greige	48.4	17.1
	307132	Honey	54.3	22.3
	307133	Olive	41.4	12.1
	307134	Old Silver	38.3	10.3
	307135	Linen Shade	43.4	13.4
	307136	Camelot	41.8	12.4
	307137	Violet	32.8	7.4
	307138	Carthusian	31.6	6.9
	307139	Snake Charmer	32.6	7.4
	307140	Paprika Blossom	31.0	6.7
	307141	Summernight	34.2	8.1
	307142	Charcoal	21.4	3.4
	307143	Espresso	22.5	3.7
	307144	Cinema	26.2	4.8
307145	Touareg	24.6	4.3	

\* **Light Value:** L Value = L according to CIE L\*a\*b\* colour space, Y Value = Light Reflectance Value according to BS 8493  
**Lichtreflexionswerte:** L-Wert = L gemäß CIE L\*a\*b\* Farbspektrum, Y-Wert = Lichtreflexionswert gemäß British Standard BS 8493  
**Valores de Reflectancia de Luz:** Valor L = L según CIE L\*a\*b\* espacio de color, Valor Y = Valor de reflectancia de luz según el estándar británico BS 8493  
**Valeurs concernant la lumière:** Valeur L = L faisant référence à la méthode CIE L\*a\*b\* pour la couleur, Valeur Y = Valeurs de réflectance de la lumière selon le British Standard BS 8493  
**Licht waarden:** L Waarde = L volgens CIE L\*a\*b\*kleurruimte, Y Waarde = Licht Reflectie Waarde volgens BS 8493  
**Indici di riflettanza alla luce:** Indice L = L secondo CIE L\*a\*b\* colour space, Indice Y = Indice di riflettanza alla luce secondo la norma BS 8493

# Environmental Data Sheet

Construction			
Yarn system	100% BCF Solution Dyed PA 6		
Backing system	Graphlex®		
Recycled Content	Total	Pre consumer	Post consumer
Product average	44,84%	44,84%	0,00%
Yarn average	0,00%	0,00%	0,00%
Recycled content can be subject to differences between colours. See details for individual colours on next page.			
Carbon Footprint			
Global Warming Potential (kgs CO <sub>2</sub> equivalents/sq meter)			
Full life-cycle carbon footprint (following our EPD results or EPD calculation method)	Raw materials and Production:	7.8 kg CO <sub>2</sub> eq./m <sup>2</sup>	
	Delivery and installation:	0.35 kg CO <sub>2</sub> eq./m <sup>2</sup>	
	Use (10 years):	2 kg CO <sub>2</sub> eq./m <sup>2</sup>	
	End of life (waste to energy):	4.2 kg CO <sub>2</sub> eq./m <sup>2</sup>	
	TOTAL (10 years' lifetime):	14.35 kg CO <sub>2</sub> eq./m <sup>2</sup>	
CO <sub>2</sub> compensation	Carbon neutral Cool Carpet® is standard		
Manufacturing			
Location	Scherpenzeel, NL Factory is certified ISO 14001 since 1996 and ISO 9001 since 1990		
Installation Impacts			
TacTiles™	Optimised for glue-free installation with TacTiles™ connectors with virtually zero VOCs		
Installation Waste	In a typical installation* using the installation method below:		
	Quarter turn – 3-4% installation waste		
	For reference: 2 metre wide broadloom typically generates 7-10 % installation waste		
* In a rectangular building, installed before walls.			
Indoor Air Quality			
GUT (Gemeinschaft umweltfreundlicher Teppichboden)	The product passes all requirements of GuT's testing criteria regarding hazardous substances, emissions and odour. GUT PRODIS Certificate no. 13DDB10A		
CRI (Carpet & Rug Institute)	Compliant to LEED IQ 4.3 credit (tested in Eurofins to the equivalent test of the CRI Green Label Plus)		
Compliance to Green Building Schemes			
SSee next page to check how our products contribute to the main green building certification schemes (BREEAM, LEED, HQE and DGNB)			
Type III Environmental Product Declaration			
EPD according to ISO 14025	This product has a type III Environmental Product Declaration, <a href="#">EPD-IFF-2010211-E</a>		

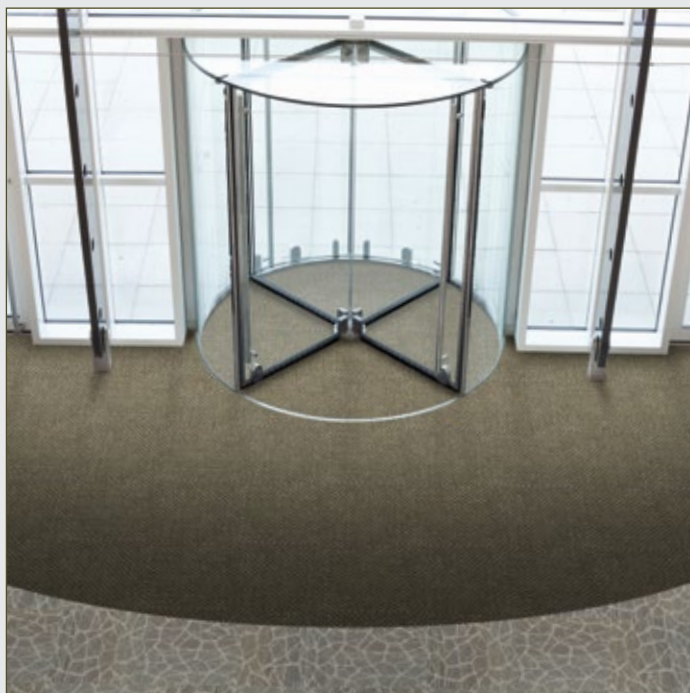
Recycled content – colour level						
Colourway	Total recycled content	Pre consumer recycled content	Post consumer recycled content	Yarn recycled content	Pre consumer recycled content	Yarn post consumer recycled content
307130 Lightgrey	44,84%	44,84%	0,00%	0,00%	0,00%	0,00%
307131 Greige	44,84%	44,84%	0,00%	0,00%	0,00%	0,00%
307132 Honey	44,84%	44,84%	0,00%	0,00%	0,00%	0,00%
307133 Olive	44,84%	44,84%	0,00%	0,00%	0,00%	0,00%
307134 Old Silver	44,84%	44,84%	0,00%	0,00%	0,00%	0,00%
307135 Linen Shade	44,84%	44,84%	0,00%	0,00%	0,00%	0,00%
307136 Camelot	44,84%	44,84%	0,00%	0,00%	0,00%	0,00%
307137 Violet	44,84%	44,84%	0,00%	0,00%	0,00%	0,00%
307138 Carthusian	44,84%	44,84%	0,00%	0,00%	0,00%	0,00%
307139 Snake Charmer	44,84%	44,84%	0,00%	0,00%	0,00%	0,00%
307140 Paprika Blossom	44,84%	44,84%	0,00%	0,00%	0,00%	0,00%
307141 Summernight	44,84%	44,84%	0,00%	0,00%	0,00%	0,00%
307142 Charcoal	44,84%	44,84%	0,00%	0,00%	0,00%	0,00%
307143 Espresso	44,84%	44,84%	0,00%	0,00%	0,00%	0,00%
307144 Cinema	44,84%	44,84%	0,00%	0,00%	0,00%	0,00%
307145 Toureg	44,84%	44,84%	0,00%	0,00%	0,00%	0,00%
Compliance to Green Building Schemes						
BREEAM (UK and international)	<b>BRE Green Guide Ratings:</b> <b>Office - A rated</b> <b>Education - A rated</b> <b>Health Care - A + rated</b> <b>Retail (by fashion) - A+ rated</b> Potential contribution to following categories and credits: Hea 02 - Indoor air quality – minimising sources of air pollution Hea 05 - Acoustic Performance Mat 01 - Life Cycle Impacts Mat 05 - Designing for robustness Wst 01 - Construction Waste Management					
LEED 2009 US	Potential direct or indirect contribution to following categories and credits: Indoor Environmental Quality Credit 4.1 Low Emitting Materials: Adhesive & Sealants Credit 4.3 Low Emitting Materials: Carpet Systems Materials and Resources Credit 2.1 Construction Waste Management Credit 4.1 Recycled content Credit 5.1 Regional Materials Innovation and Design Credits 1-4 1 Climate Neutral Products Credits 1-4 1 Pilot Credit 43, Certified Products					
HQE (FR)	Potential direct or indirect contribution to several points within following targets: 2. Integrated choice of products and construction materials 3. Low site nuisance 9. Acoustic comfort 10. Visual comfort 11. No unpleasant smells 12. Sanitary quality of areas 13. Sanitary air quality					
DGNB (D)	Potential direct or indirect contribution to following criterion ENVIRONMENTAL QUALITY ENV1.2 Local Environmental Impact ECONOMIC QUALITY ECO1.1 Building-Related Lifecycle Costs ECO2.1 Efficient Use of Space SOCIOCULTURAL AND FUNCTIONAL QUALITY SOC1.2 Indoor Air Quality SOC1.3 Acoustic Comfort TECHNICAL QUALITY TEC1.5 Ease of Cleaning and Maintenance TEC1.6 Ease of Dismantling and Recycling					



## TacTiles™

---

- A smarter, more sustainable way to install carpet tiles
- No need for liquid adhesives
- Fitting tiles is quick, clean and easy and the process virtually eliminates emissions
- No damage to sub floors, and nothing to stop you lifting or moving the carpet whenever you want



## Entrance Matting

---

Incredibly tough, hard-wearing and practical; indoor entrance matting acts as the first line of defence to any interior by removing almost 100% of dirt, rain and mud before it's walked into your flooring.

Both of the products in our commercial entrance matting range – Barricade and Foyer – are resilient, functional, easy to maintain and stylish. And it's for these reasons that our barrier matting forms an essential part of any maintenance programme needed to keep your floorcovering looking its very best.